

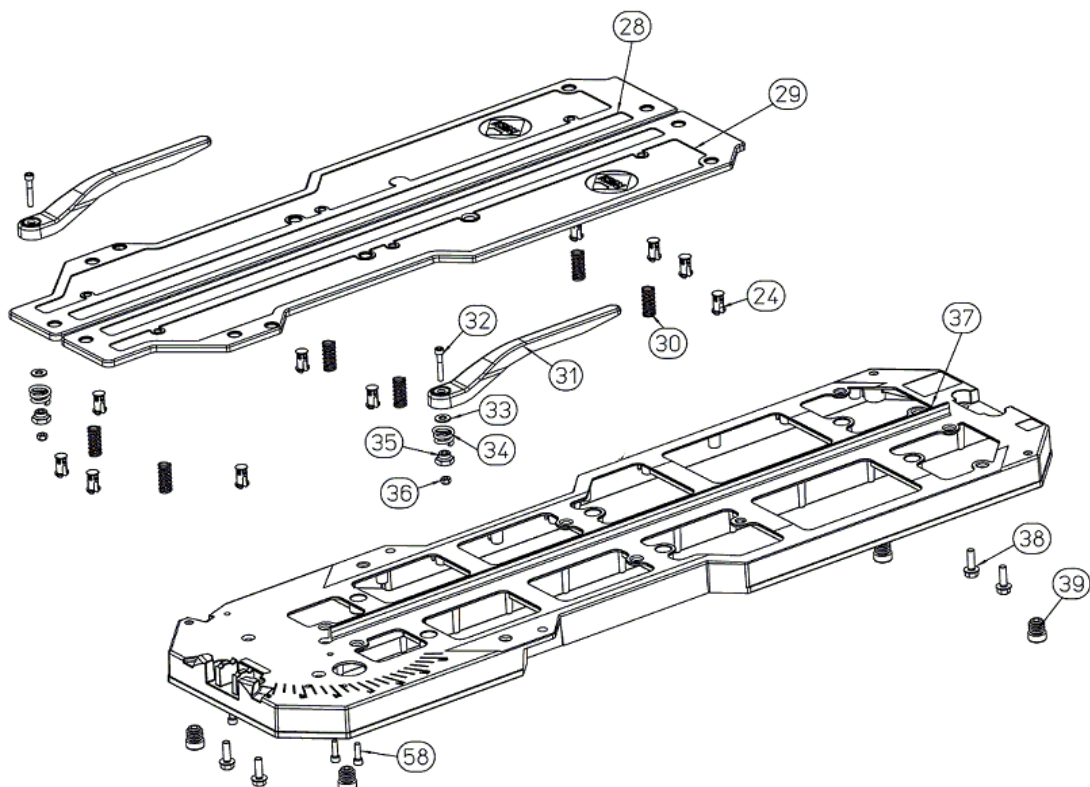
Part-list	ES	EN	Prod.
1	A	GRUPO BASE	BASE GROUP
2	B	GRUPO GUIAS	GUIDES GROUP
3	C	GRUPO ESCUADRA	SQUARE GROUP
4	D	GRUPO PORTAHERRAMIENTAS	TOOLHOLDER GROUP

Prod.	ES	EN	From serial num.
17990	TX-900 BOELS	TX-900 BOELS	-

Queda reservado el derecho de introducir cualquier modificacion técnica sin previo aviso

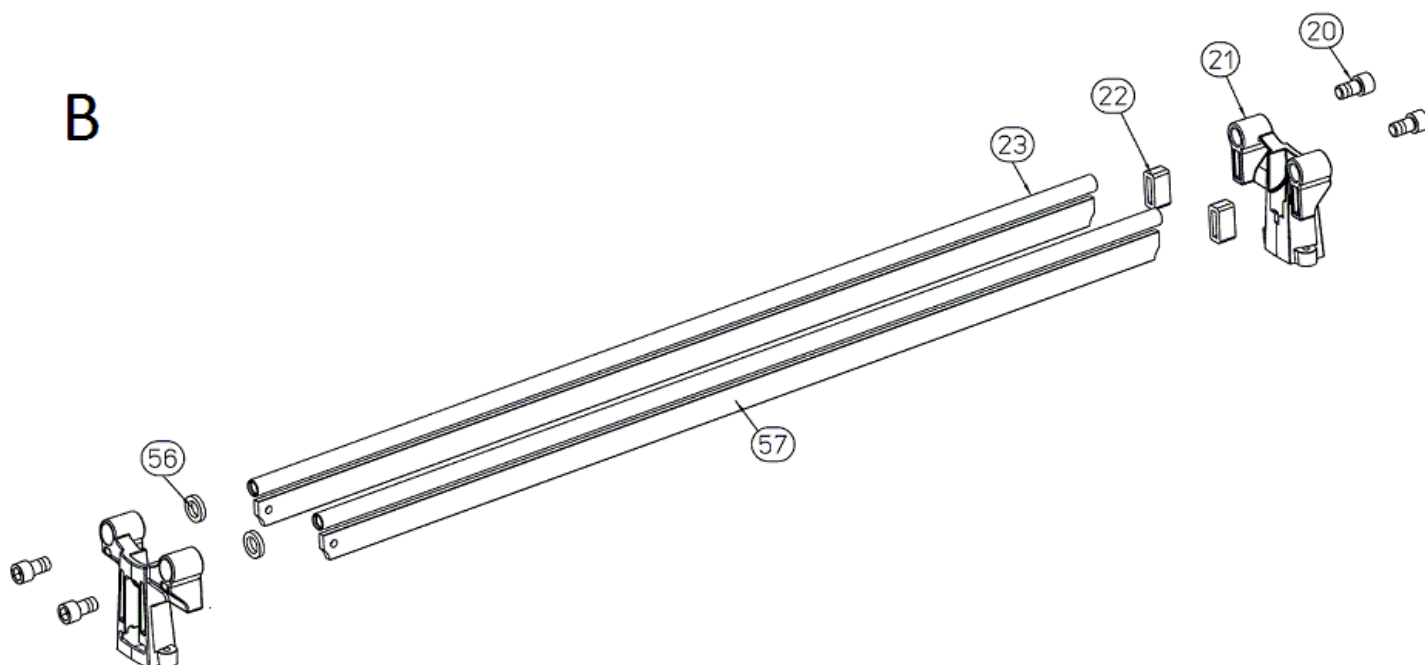
We reserve the right to introduce any technical modification without previous notice

A

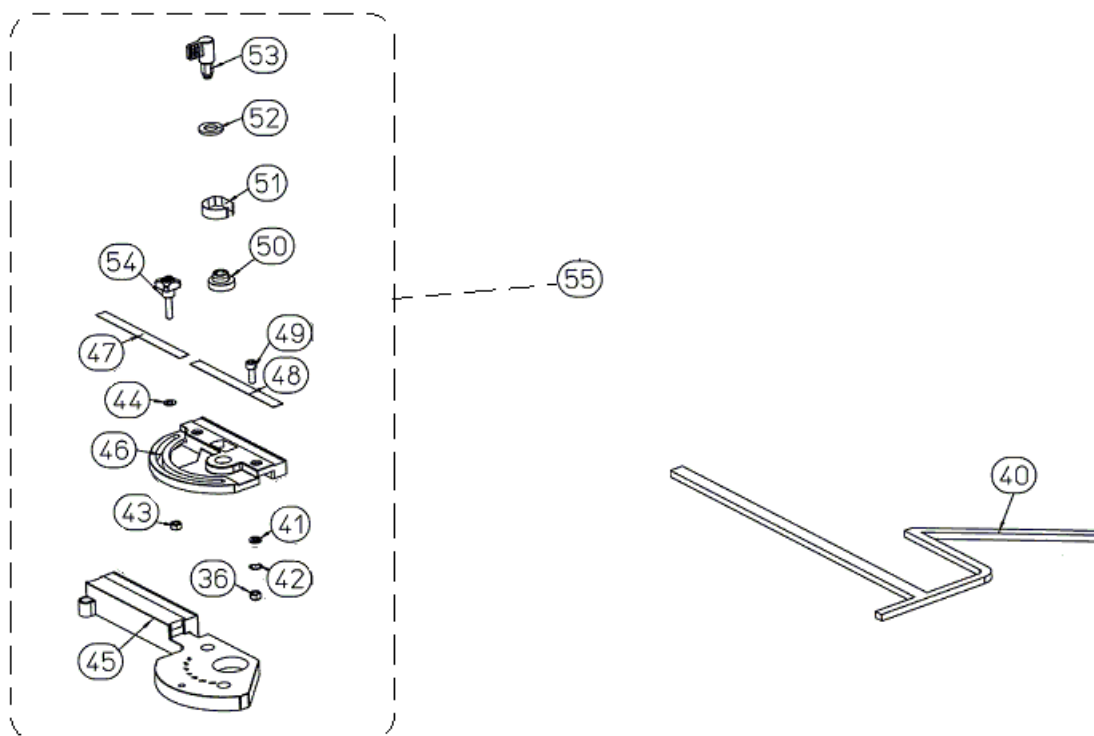


Part-list	ES	EN	Prod.
24	12086 10	CLIP BASE FLOTANTE TI	CLIP FLOATING BASE TI
28	17014 1	BASE FLOTANTE DER.TX-900 V2	FLOATING BASE RIGHT TX-900 V2
29	17015 1	BASE FLOTANTE IZQ.TX-900 V2	FLOATING BASE LEFT TX-900 V2
30	12097 6	MUELLE COMPRESION 35,2X13 Ø1,7	COMPRESSION SPRING 35,2X13 Ø1,7
31	12081 2	BRAZO LATERAL TI/TX	ARM LATERAL TI/TX
32	17177 2	TORN DIN 912 M6X35 6.8 ZN	SCREW DIN 912 M6X35 6.8 ZP
33	50002 2	ARAND DIN 9021 A6,4 PA	WASHER DIN 9021 A6,4 PA
34	12095 2	MUELLE CONICO TI	CONIC SPRING TI
35	12114 2	TUERCA ESPECIAL TI	NUT ESPECIAL TI
36	40020 5	TUERCA DIN 985 M6 CL8 ZN AUTOBLOC	HEX LOCK NUT DIN 985 M6 CL8 ZP
37	17786 1	BASE TX-900 V2 NARANJA INY.	BASE TX-900 V2 ORANGE
38	15172 4	TORN DIN 6921 M8X25 6.8 ZN	SCREW DIN 6921 M8X25 6.8 ZP
39	17549 4	CONTERA GOMA ESF.Ø 21X25	RUBBER ROUND RIBBED INSERT Ø21X25
58	50105 3	TORN DIN 912 M6X20 6.8 ZN	SCREW DIN 912 M6X20 6.8 ZP

B

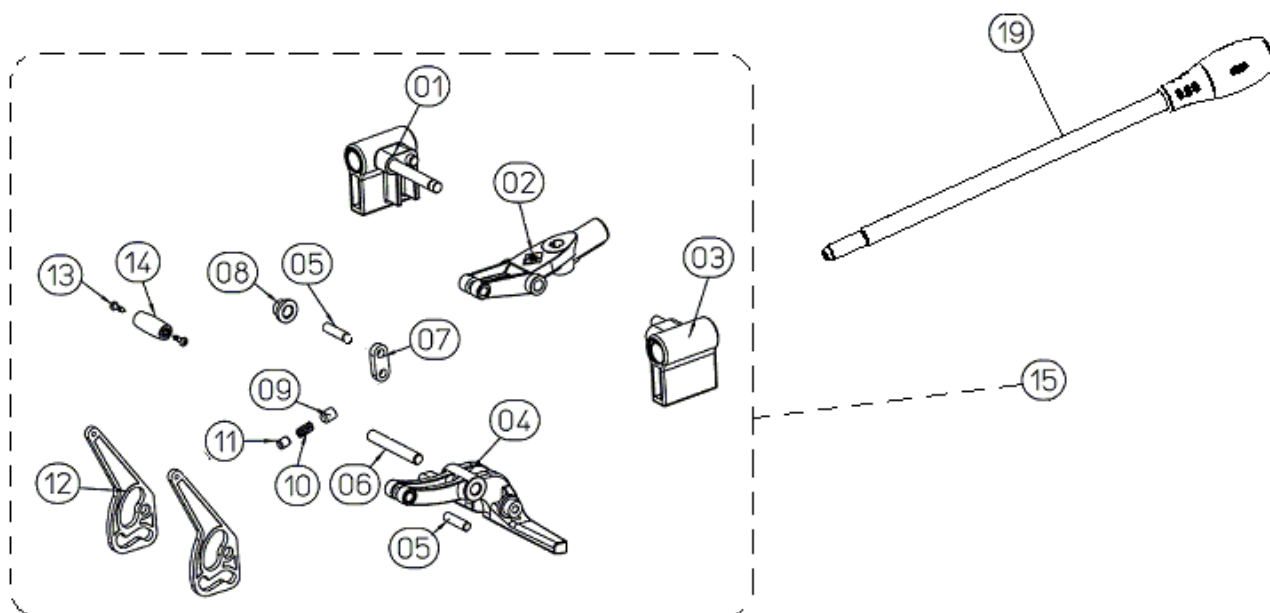


Part-list	ES	EN	Prod.
20	17020 4	TORN DIN 912 M14X25 8.8 PVN	SCREW DIN 912 M14X25 8.8 BLUED
21	16102 2	SOPORTE GUIAS TX V5	GUIDE SUPPORT TX V5
22	17016 2	TOPE CORREDERAS TX	CARRIER TOP TX
23	16104 2	GUIA Ø 18X3 L=1080,5 CROMADA	CHROMING GUIDE Ø 18X3 L=1080,5
56	16026 2	TOPE CORREDERA TM/TX	CARRIER TOP TM/TX
57	17677 2	PERFIL "I" TX-900 V2 ENDEREZADO	PROFILE "I" TX-900 V2



Part-list	ES	EN	Prod.
40	17813 1	TOPE LATERAL TX	LATERAL STOP TX
41	25177 1	ARAND DIN 125 A6,4 ZN	WASHER DIN 125 A6,4 ZP
42	17578 1	ARAND A8 RETENCION DENTADA	WASHER A8
43	15132 1	TUERCA DIN 934 M6 CL8 ZN	HEX NUT DIN 934 M6 CL8 ZP
44	17007 1	ARAND DIN 988 6X12X0,5 REGLAJE	WASHER DIN 988 6X12X0,5 REGL.
45	17018 1	ESCUADRA FIJA TX	FIXED SQUARE TX
46	17019 1	ESCUADRA GIRATORIA TX	ROTABLE SQUARE TX
47	17053 1	CINTA METRICA ESCUADRA FIJA	METRIC TAPE FIXED SQUARE
48	17070 1	CINTA ESCUADRA GIRATORIA TX-S	REVOLVING SQUARE TAPE TX-S
49	45051 1	TORN DIN 912 M6X16 6.8 ZN	SCREW DIN 912 M6X16 6.8 ZP
50	17041 1	LEVA TOPE LATERAL	LATERAL TOP CAN
51	17069 1	POSTIZO LEVA	FALSE CAM
52	50210 1	ARAND DIN 125 A13 ZN	WASHER DIN 125 A13 ZINC
53	17796 1	POMO TOPE LATERAL V2 NEGRO	LATERAL STOP KNOB BLACK
54	17797 1	POMO M6X25 NEGRO	BLACK KNOB SET M6X25
55	17896 1	CJ.ESCUADRA TX BOELS	SQUARE SET TX BOELS

D



Part-list		ES	EN	Prod.
1	16832	1	CORREDERA TX CON EJE PINTADA NARANJA V2	PAINTED SLIDER W/AXLE ORANGE V2
2	17793	1	PORTAHERRAM.PINTADO TX NARANJA	PAINT. TOOLHOLDER TX ORANGE
3	16831	1	CORREDERA TX SIN EJE PINTADA NARANJA V2	PAINTED SLIDER WO/AXLE ORANGE V2
4	17064	1	PALANCA PISON TX	PITCHER LEVER TX
5	17100	2	PASADOR CILINDRICO Ø 8X30	CILINDRIC FASTENER DIAM 8X30
6	17036	1	EJE DESLIZANTE	SLIDING AXLE
7	17207	1	BIELA TR/TX	CONNECTING ROD TR/TX
8	17035	2	TACO DESLIZANTE TX	SLIDING STOPPER TX
9	17580	1	TORN DIN 913 M10X10X1,25 6.8	SCREW DIN 913 M10X10X1,25 6.8
10	15128	1	MUELLE FRENO PORTAHERRAM.	TOOLHOLDER BRAKE SPRING
11	15113	1	TACO DE NYLON Ø 5.5X 1.5 K-180	NYLON STOPFEN DIA.5.5X 1.5 K-180
12	17034	2	LEVA TX	CAM TX
13	50211	2	TORN DIN 7981 3,9X16 ST 6.8 ZN	SCREW DIN 7981 3,9X16 ST 6.8 ZP
14	17792	1	POMO LEVA POSICIONADORA V2 NEGRO	POSITION CAM KNOB V2 BLACK
15	17788	1	CJ.SEPARADOR TX NARANJA	SEPARATOR SET TX ORANGE
19	17775	1	CJ.MANGO M-10 NEGRO	HANDLE SET M-10 BLACK